

## Commercial Product Systems

---



### RAYCHEM SELF-REGULATING HEATING CABLES

- XL-Trace Pipe and Fire Suppression System Freeze Protection
- IceStop Roof & Gutter De-Icing
- RaySol Floor Heating and Freezer Frost Heave Prevention
- HWAT Domestic Hot Water Temperature Maintenance
- ElectroMelt Surface Snow Melting
- Grease Waste Flow Maintenance



### RAYCHEM (RIM) PREMIERE ROOF ICE MELT PANEL SYSTEMS

- Roof Ice Melt (RIM) Aesthetically Elegant, Concealed Roof & Gutter De-icing Solution
  - RIM: High performance system for severe wind speed, elevation, low temperatures, heavy snow load areas
  - RIM2: Energy-efficient system for moderate wind speed, elevation, low temperatures, light to moderate snow load areas



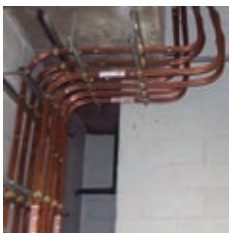
### RAYCHEM MINERAL INSULATED (MI) HEATING CABLES

- Surface Snow Melting
- Freezer Frost Heave Prevention
- Heat Loss Replacement
- Electric Thermal Storage



### RAYCHEM ADVANCED HEAT-TRACING CONTROL, MONITORING, & POWER DISTRIBUTION SYSTEMS

- ACS-30 Multi-Application, Multi-Circuit, Distributed Control System
- C910-485 Single Circuit Controller
- HTPG Combination Power Distribution and Control Panel for Pipe Freeze Protection Systems
- SMPG Combination Power Distribution and Control Panel for Snow Melting and Roof De-Icing Systems



### PYROTENAX MINERAL INSULATED (MI) WIRING SYSTEMS

- UL/ULC 2-Hour Fire-Rated Wiring System
- Emergency Feeders for Fire Pumps, Elevators, Smoke Extraction and Pressurization Fans
- Critical Fire Alarm Circuit Protection

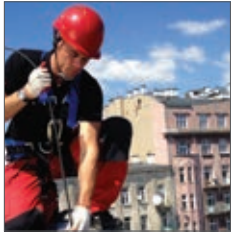


### TRACETEK COMMERCIAL & ENVIRONMENTAL LEAK DETECTION

- Water Leak Detection for Computer Rooms, HVAC Equipment and Overhead Piping above Sensitive Areas
- FM 7745 Approved Fast Fuel Sensor for Hydrocarbons
- Strong Mineral Acid Leak Detection for Sulfuric and Nitric Acid
- Leak Detection Cable for Conductive Liquids

# Consultant and Designer's Toolbox

---



## INTEGRATED SERVICES

- Proposals & Estimates
  - Engineering & Design
  - Project Management
  - Construction / Installation
  - Field Support Services
- 



AUTODESK®  
SEEK

## AUTODESK SEEK, BIM, TRACE-IT

- Autodesk® Seek is a search engine that enables architects, engineers, and other design professionals to quickly discover, preview, and download our BIM files and product specifications for use in Autodesk Revit® or AutoCAD®.
  - Our BIM families for ElectroMelt and IceStop assist with the design and modeling of **surface snow melting** and **roof de-icing** into a BIM project. For more information, visit <http://seek.autodesk.com>, and search on Pentair.
  - Trace-It is an add-in application for Autodesk Revit that assists a design professional or contractor with the design, specification and modeling of **pipe freeze protection** and **flow maintenance applications** into BIM projects. To download Trace-It, go to <http://apps.autodesk.com>, and type in Trace-It.
- 

**Raychem**  
Trace-It



## CAD DETAILS

- Hosting website for Pentair Thermal Building Solutions application specifications. For more information, visit [www.caddetails.com](http://www.caddetails.com) and search on Pentair Thermal Building Solutions.
- 



## TRACECALC PRO FOR BUILDINGS

- Online design tool for creating simple or complex heat-tracing designs for pipe freeze protection or flow maintenance applications. Projects can have multiple applications, circuits, and pipe segments.
- 



## ROOF & GUTTER DE-ICING CALCULATOR

- Online design tool for creating roof & gutter de-icing design and layout.
- 



## SNOCALC

- Online design wizard for snow melting design and layout.
- 

**Raychem**  
SAVEWATT

## SAVEWATT

- Online comparative analysis tool for comparing Raychem's HWAT Hot Water Temperature Maintenance versus a Recirculation System.
- 




## QUICK VOLTAGE DROP CALCULATOR

- Online tool that calculates the voltage drop for Pyrotenax MI copper-sheathed high-temperature wire and cable to determine the appropriate wiring cable size.
- 

**Raychem**  
ACS-30

## RAYCHEM ACS-30 PROGRAM INTEGRATOR

- Online Windows PC utility that allows users to set up ACS-30 circuit databases on their PC.
- 

Pentair is owned by Pentair or its global affiliates. All other trademarks are the property of their respective owners. Pentair reserves the right to change specifications without prior notice. © 2011-2017 Pentair.  @PentairThermal